

Polo Wimbledon Lady



- POLO SPORTIVA
IN 100% POLIESTERE
- Colletto in rib
 - Tre bottoni in tinta per la versione Man e Boy, quattro per la versione Lady
 - Nastro di rinforzo interno collo
 - Fondo manica aperto con cucitura a due aghi
 - Imbustate singolarmente

S - M - L - XL

Colori e codici articolo:

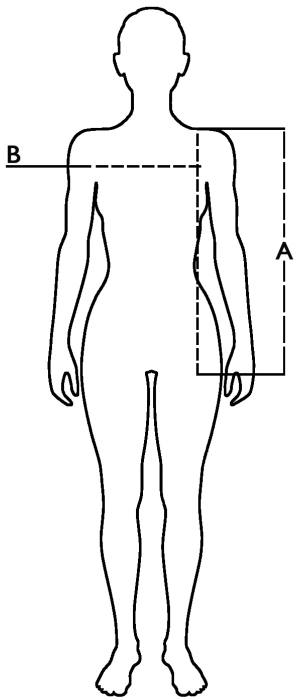
997960 WHITE

997961 BLACK




997962 FUCSIA

Tabella misure

| Sizes (+/- 5%) | A front lenght | B chest |
|-------------------|----------------------|------------|
| XS | 61 | 40 |
| S | 63 | 42 |
| M | 65 | 44 |
| L | 67 | 46 |
| XL | 69 | 48 |



Descrizione tecnica

| | | |
|----------------------------------------|----------------------------------------------------------------------------------------------|--------------------------------------------------------------------------------------------------------|
| | Composizione / Fabric Composit |  g/m ² |
| Tessuto esterno/Shell | 100% poliestere | 130 |
| Imballo/Packages |  60 pcs | |
| Istruzioni di Lavaggio / Care Label |  | |